

# I HAVE A BROAD RANGE OF INTERESTS



**WHAT SHOULD I DO?**

# DECISION-MAKING PROCESS



## How do I decide?

- + What am I interested in?
- + Who am I?
- + What can I do?

# AREAS OF INTEREST



## What am interested in?

- + Hobbies: sport, music, creative pursuits, arts and crafts, culinary art, theater, travel, reading, writing
- + Content: emergency medical services, design, business, economics, politics, technology, IT...

# AREAS OF INTEREST

## What influences my interests?

- + Take external factors into consideration: location, environment, parent's profession etc.
- + Know your interests: interest tests, open days, open nights, trial lessons and courses, read blogs/magazines

# ANALYZING YOUR PERSONALITY



## What suits me more?

- + Extroverted: team work, communication, exchanging ideas, people, presentation, contact, openness
- + Work environment: marketing, sales, PR, management, event planning, consulting, acting, teaching

# ANALYZING YOUR PERSONALITY

## What suits me more?

- + Introverted: observation, written communication, listening, depth, quiet, room to retreat
- + Work environment: research and development, auditing, quality management, psychology, physiotherapy, speech therapy, IT, strategic consulting

# ANALYZING YOUR PERSONALITY

## What suits me more?

- + Sensing: numbers, data, facts, functionality, lists, plans, precision, details, results, real-life, clarity, the here and now
- + Work environment: controlling, engineering, logistics, surgery, dentistry, trades, management, tax and auditing, empirical psychology, politics

# ANALYZING YOUR PERSONALITY



## What suits me more?

- + Intuition: creativity, vision, meaning, concepts, atmosphere, possibilities, interpretation, connections, the big picture, theories, the future
- + Work environment: marketing, philosophy, theology, cultural studies, anthropology, design, art, psychology, strategy, business development



# ANALYZING YOUR PERSONALITY



## What suits me more?

- + Thinking: logical, factual, from a distance, principles, law, mind, objectivity, longevity, analysis
- + Work environment: law, informatics, controlling, market research, finance, analysis, management, psychiatry, radiology, oncology, surgery

# ANALYZING YOUR PERSONALITY

## What suits me more?

- + Feeling: relationships, empathy, service, heart, brevity
- + Work environment: psychology, social work, teaching, human resources, sales, sustainability, service, operative management

# ANALYZING YOUR PERSONALITY

## What suits me more?

- + Judging: structure, hierarchy, organization, routine, rules, plans, results, control
- + Work environment: law, accounting, controlling, teaching, administrative office, government departments, management, corporate

# ANALYZING YOUR PERSONALITY



## What suits me more?

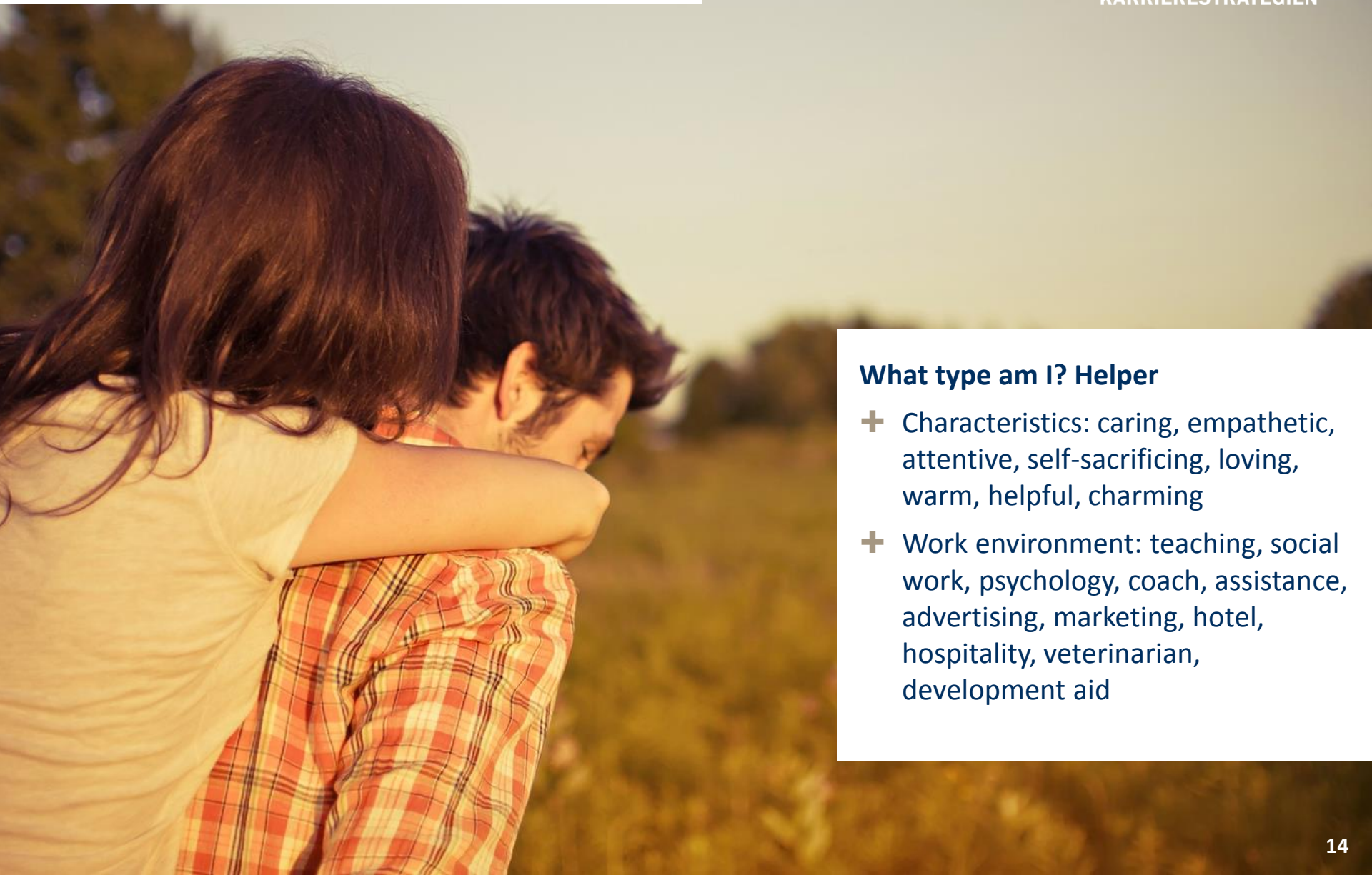
- + Perceiving: flexibility, spontaneity, versatility, change, freedom, process
- + Work environment: police, fire brigade, rescue services, emergency services, journalism, PR, marketing, sales, editing, presenting, consulting, agency, start-up



## What type am I? Perfectionist

- + Characteristics: precise, thorough, level-headed, demanding, diligent, critical
- + Work environment: law, quality management, process management, controlling, finance, engineering, surgery, microbiology, psychology, teaching

# ANALYZING YOUR PERSONALITY



## What type am I? Helper

- + Characteristics: caring, empathetic, attentive, self-sacrificing, loving, warm, helpful, charming
- + Work environment: teaching, social work, psychology, coach, assistance, advertising, marketing, hotel, hospitality, veterinarian, development aid

# ANALYZING YOUR PERSONALITY



## What type am I? Doer

- + Characteristics: determined, organized, confident, ambitious, pragmatic, hard-working, vain, impatient, adaptable
- + Work environment: business management, strategic consulting, senior management, entrepreneurship, marketing, sales, start-up, industrial engineering

# ANALYZING YOUR PERSONALITY

## What type am I? Individualist

- + Characteristics: unique, creative, sentimental, intense, sensitive, stylish, unconventional
- + Work environment: design, fashion, cultural administration, architecture, director, theater, arts, web development, theology, occupational therapy, osteopathy, naturopathy



# ANALYZING YOUR PERSONALITY

## What type am I? **Observer**

- + Characteristics: factual, objective, reserved, well-read, distant, sparse, analytical
- + Work environment: law, IT, business intelligence, process management, research and development, archeology, logistics, political science, information management, librarian



# ANALYZING YOUR PERSONALITY

## What type am I? Sceptic

- + Characteristics: vigilant, mistrusting, loyal, responsible, foreseeing, safeguarding
- + Work environment: career in public service, business management, insurance, teaching, auditing, tax advisor, controlling, hazard control, physiotherapy, law, development aid

# ANALYZING YOUR PERSONALITY



## What type am I? Enthusiast

- + Characteristics: enthusiastic, future-oriented, spontaneous, curious, lively, flexible, optimistic
- + Work environment: advertising, marketing, sales, event management, hotels, tourism, fundraising, customer service, social enterprise, management, film production, journalism, project development

# ANALYZING YOUR PERSONALITY

## What type am I? Challenger

- + Characteristics: assertive, present, powerful, impulsive, dominant, courageous, direct
- + Work environment: law, police, pilot, army, emergency medical services, structural engineer, politics, agriculture, trader, entrepreneur, boss

# ANALYZING YOUR PERSONALITY

## What type am I? Peacemaker

- + Characteristics: peace-loving, gentle, approachable, tolerant, patient, easy-going, diplomatic, friendly
- + Work environment: teaching, psychology, mediator, theology, osteopathy, gerontology, social work, health sciences, human resources, architecture, carpenter, dramatic arts, market research

# ANALYZING FEEDBACK

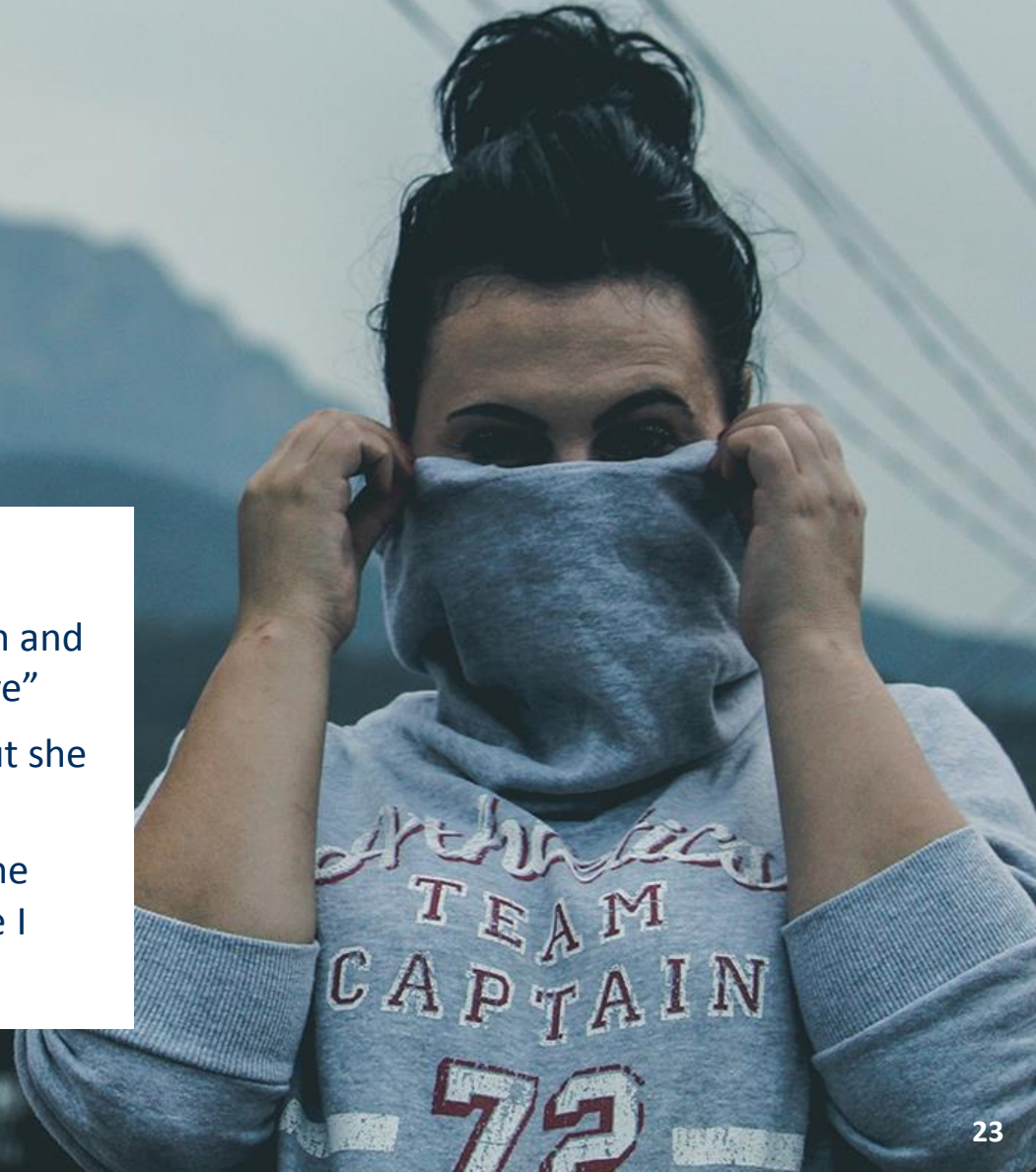
## How do others see me?

- + Strengths/weaknesses
- + Comparison with others
- + Areas for development

## REAL-LIFE EXAMPLE

### Hedda is strong, fast and analytical...

- + She is very athletic, motivated by competition and believes in the motto, “Only the strong survive”
- + Her school performance is average to bad, but she is a good speaker.
- + Others describe her as loud and dominant. She makes statements like, “Where I am, is where I want to be!”



## REAL-LIFE EXAMPLE

### Leander needs a little push now and then...

- + He is a peacemaker and mediator; things are nicer with him than without him.
- + He is deep and precise; he is motivated by ideals and meaning
- + Others say listening is his strength; he prefers one-on-one conversations to groups
- + Sometimes he is scared of coming across as too “soft” for a boy





# REAL-LIFE EXAMPLE

## Emily takes a light-hearted approach to life and never misses a party...

- + She isn't sure what her interests are – meeting friends, partying, shopping, watching series
- + About her talent, she says she can do a little bit of everything, but nothing properly
- + She can motivate others, her circle-of-friends is huge. In her year book, she's known as "Little Miss Sunshine"



## REAL-LIFE EXAMPLE

### Kim doesn't make things easy for herself...

- + She talks about what she can't do and what scares her. She definitely does not want to move out of home.
- + Math is her strength; however, she can't imagine studying engineering.
- + She is hard-working, neat and tidy. If someone needs her help, she comes to their aid straight away.



**FOR THE TO-DO-LIST**

**STRUSS+**  
**PARTNER**  
KARRIERESTRATEGIEN

### **How should I proceed?**

- + Go step-by-step
- + Write a checklist
- + How do you see yourself and how do others see you?
- + Collect information on courses and degrees
- + Filter based on your own personality and abilities
- + If needed, seek external support
- + Visit universities, do internships, get an idea

## Interest tests

- + Career aptitude test: <http://bit.ly/1WizBwg>
- + What job would make you happiest?  
<http://bit.ly/1uZyfKk>
- + Holland Code career test: <http://bit.ly/1BJN5CF>
- + Geva Institute <http://bit.ly/1QZBIWb>
- + Student orientation test from Baden Württemberg  
<http://bit.ly/1owR99H>
- + Student orientation test by newspaper *DIE ZEIT*  
<http://bit.ly/1zuzosr>
- + Orientation test by *Blicksta* <http://bit.ly/1v0dwpw>
- + Aptitude test by Technical University of Cologne  
<http://bit.ly/1Kfu7hn>

## Interest tests

- ✦ Overview by e-fellows <http://bit.ly/20PUe5V>
- ✦ Overview by *studienwahltest.de* <http://bit.ly/1SLwETy>
- ✦ Overview by Federal Institute for Vocational Education and Training <http://bit.ly/1KKhZVI>

## Skills test

- + IQ test from mypersonality <http://bit.ly/1GuyKLZ>
- + IQ test by newspaper *Süddeutsche* <http://bit.ly/1QZDAbY>
- + IQ test by newspaper *Die Welt* <http://bit.ly/1KKgdUB>
- + IQ test from Psychomeda <http://bit.ly/1SLwRGu>
- + Preparation for medical school admissions test <http://bit.ly/1Qw7Jgm>

## Online insight into careers (interviews, videos)

- + Project: “What do they do?” <http://bit.ly/1L8lamY>
- + 40stunden.de profiles workers <http://bit.ly/1SIH6R6>
- + “Friends of friends” profiles workplaces  
<http://bit.ly/1O6CNBp>
- + On “whatchado” you can read stories about work  
<http://bit.ly/1aY9OnT>

## Apps for smartphones

- ✦ The app “*Berufe-Entdecker*” (“Discover Professions”) by the Federal Job Agency ascertains interests and uncovers fields of work, specializations and professions: <http://bit.ly/1nW68tJ> (free)
- ✦ The app “*Zukunft läuft*” (“The Future is Running”) by the Ministry for Education, Science and Culture of Rheinland-Pfalz makes recommendations for areas for study and training based on your interests: <http://bit.ly/1XbdYet> (free)



## Books

- + The Everything Career Tests Book <http://amzn.to/1XUClu3>
- + Do what you are <http://amzn.to/1RquoL1>
- + Now what? <http://amzn.to/20BnHfi>
- + The Pathfinder <http://amzn.to/1WOyzbn>

## Career fairs and expos:

- + *Einstieg* <http://bit.ly/1bZGSFH>
- + *Stuzubi* <http://bit.ly/1PHdrMt>
- + *Jobmessen* <http://bit.ly/1TcxZRN>
- + *Absolventenkongress* <http://bit.ly/1Xntq7H>

## USEFUL LINKS

**Interested in the presentation?**

+ Feel free to send us an email at  
[kontakt@strussundpartner.de](mailto:kontakt@strussundpartner.de)